

Tenda



IT7-LRS

4MP Bullet Security Camera



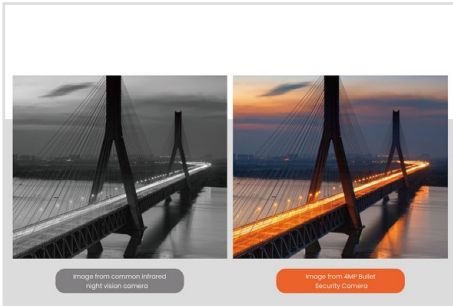
IT7-LRS

4MP Bullet Security Camera

Product Description

The Bullet Security Camera IT7-LRS is a high-performance 4MP (2560x1440) engineering camera that integrates such functions as infrared night vision, motion detection and remote audio pickup. It is commonly used in factories, courtyards, shops, buildings, and some large- and small-scale engineering monitoring scenarios where contractors can use their mobile phones for remote real-time monitoring.

Selling Points



Starlight night vision with good low-light performance at the price of infrared night vision

With starlight night vision offered by the wide-aperture lens and highly sensitive sensor, the camera is more light-sensitive than common cameras and can display finer images than common infrared cameras.



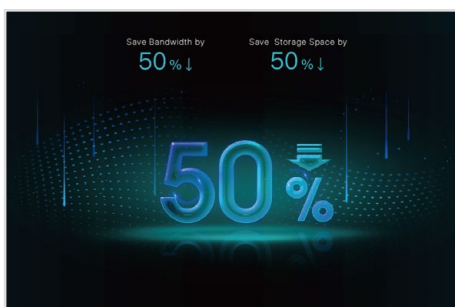
Remote audio pickup over 5 m supported by the inbuilt highly sensitive microphone

With an inbuilt highly sensitive microphone which supports remote audio pickup over 5 m, the camera can sync audio and video.



Multi-terminal real-time monitoring for light of heart

The camera supports remote monitoring on the PC and app, with easy and convenient operations and management.



H.265 coding technology for smooth video and efficient data storage

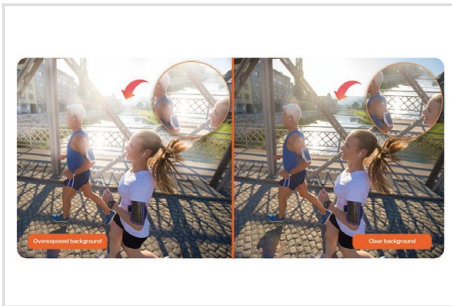
Compared with H.264, the new-generation H.265 saves 50% in video data size, which further smoothes the videos with band width saved and saves the data storage space.

Selling Points



Clear monitoring details from 4MP UHD images

Equipped with a high-performance image sensor, the camera can display 4MP UHD images (2560*1440) with more monitoring details.



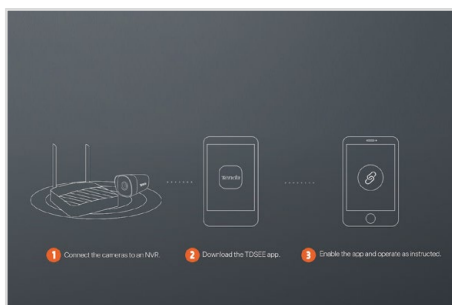
Intelligent WDR and 3D DNR for clear image

The camera uses WDR technology which compensates for backlighting on backlit images and 3D noise reduction technology which reduces image noise to display clear monitoring video.



Resistant to bad weather thanks to its IP67 waterproof and dustproof design

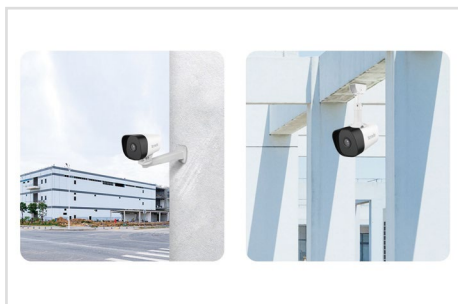
The IP67 waterproof and dustproof design enables it to resist various bad weather.



Easy network connection in merely three steps

1. Connect the cameras to an NVR.
2. Download the TDSEE app.
3. Enable the app and operate as instructed.

Selling Points



Wall-mounted or surface-mounted installation

The camera can be either wall-mounted or surface-mounted, quite flexible and convenient.

Specification

Hardware Specifications	
Ports	Power: DC 12V 1A Ethernet: 1*RJ45 100M Ethernet port on tail line
Lens	4mm@F2.2/6mm@F2.0
Product Size	85×85×166mm
Video Specifications	
Resolution	2560*1440
Coding standard	H.265/H.264
Day and Night Shift Mode	Built-in IR-CUT double filter
Noise Reduction	3D digital noise reduction
DWDR	Support
Backlight Compensation	Support
ROI	Support

Specification

Others	
Smart Alarm	S-motion detection&Human Shape detection&Customized area detection
Waterproof level	IP67
Audio	Built-in microphone(Five meters pickup)
Network protocol	RTSP、HTTP、DHCP、DDNS
Internet Network protocol	IPV4
Add device method	Wired
Infrared Night Vision Distance	50 Meters
Temperature	Operating temperature: -30°C~ 60°C Storage temperature: -40°C~70°C
Humidity	Operating humidity: 10%-95%RH (non-condensing) Storage humidity: 3% ~ 95%RH (non-condensing)
Certification	CE、RoHs、FCC
Package Contents	Security Camera, Quick installation guide

SHENZHEN TENDA TECHNOLOGY CO.,LTD.

Tenda Technology Bldg.Int y,
#1001 Zhong Shan Yuan Rd.,Nanshan District,She nzhen China.

E-mail:support@tenda.com.cn
Tel:+86-755-2765 7098
Fax:+86-755-2765 7178
PC:518055

